

 Create pdf

Lampholders and starter holders

26.291.4012

G13 Push through lampholders



colour	pkg.	wt.	part no.
white	500	7 g	26.291.4012.50

Approval: additional cULus (660W /600V)

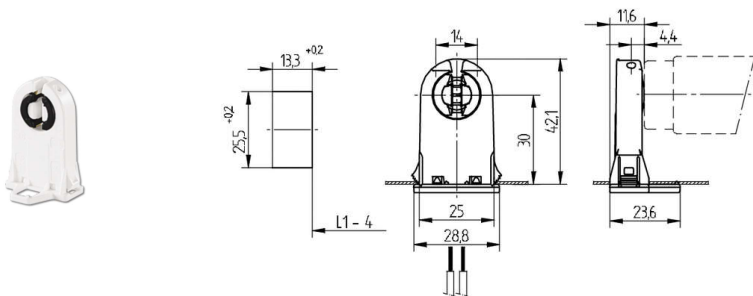
Lamp centre: 30 mm

Push fixing






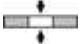

Housing: PC

Rotor: PBT

- For enclosed cut-outs
- A pair of lampholders provides a lamp length tolerance compensation of 3 mm



L1-4: Recommended dimension - The distance between the cut-outs and the tolerance should be governed by the dimensions of the respective lamps and luminaires.

T 130	Tm 110	U out 500 V					 18 AWG 0.5 -1.0 mm ²	 0.4 - 2.0	
-------	--------	----------------	---	---	---	---	---	--	---

Document generated on: Th, 9. February 2017 - 14:42